

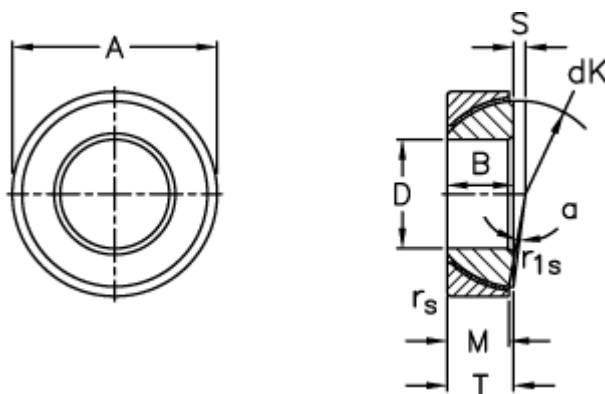
Data Sheet



Article number: 03510035

Description: Fluro Rod end GE 35SW

Measures



A	= 62 0 -0,016	Static load C0 (kN)	= 314
B	= 18	T	= 18 +0,25 -0,40
D	= 35 0 -0,012	Tilt angle	= 4
dK	= 55.5	Weight	= 268
Dynamic load C (kN)	= 157		
M	= 16		
rs, r1s min	= 1		
S	= 2.1		